

## Custom Programs

Our naturalist will customize a program to fit your needs and curriculum. We'll do our best to design or adapt a program to meet your educational goals. Custom programs can be done at Peck Farm Park or in your classroom. Home school groups welcome, please call for more information.

## How to Register?

Simply, call (630) 262-8244.

*Please make reservations at least two weeks in advance.*



4038 Kaneville Road  
Geneva, IL 60134

(630) 262-8244  
Online at: [genevaparks.org](http://genevaparks.org)

Printed on Recycled Paper

Photos taken by John Clayton & Doug Mathews and ©carriesportraits.com



4038 Kaneville Road  
Geneva, IL 60134



# Plan your next Adventure!

*Field Trip Opportunities*

*At Peck Farm Park*



4038 Kaneville Road  
Geneva, IL 60134

(630) 262-8244  
Online at: [genevaparks.org](http://genevaparks.org)

"Like" Geneva Park District on Facebook

# Field Trip Details:

- Programs and Self-Guided visits must be scheduled at least two weeks in advance.
- Maximum 30 students per program
- A confirmation form will be emailed prior to your visit.
- Please reserve lunch space when making reservations at Peck Farm Park. School name should be marked clearly on all boxes or coolers. We respectfully request that visiting groups do not bring peanut/nut products.
- Teachers who have financial needs can apply online for grants to cover the cost of their field trip.  
*Visit <http://dnr.state.il.us/lands/education/classrm/grants.htm>*

# Field Trip Fees:

## On-Site Fees:

- \$3/per student within District #304 (\$60 minimum)
- Maximum 30 students per program
- \$5/per student outside of District #304 (\$75 minimum)



## Off-Site Details & Fees:

- \$3 per student within District #304 and \$.50 per mile for travel to facilities over 15 miles from Peck Farm Park. (\$60 minimum)
- \$4 per student outside of District #304 and \$.50 per mile for travel to facilities over 15 miles from Peck Farm Park. (\$75 min.)



For more information, please call (630) 262-8244.



# Education for You!

Our programs are designed to introduce basic science principles, as well as, educate students about the natural environment through field based, hands-on activities. *Programs are aligned with the Illinois State Learning Standards.*

# Field Trip Options

## Preschool - Kindergarten

### All Sorts of Insects

Discover the amazing world of insects through sorting and classifying. Then, venture outdoors to collect and release them. *ILS: 11A*

### Symphony of Senses

Rely on your senses as you explore the natural environment around you. *ILS: 23A*

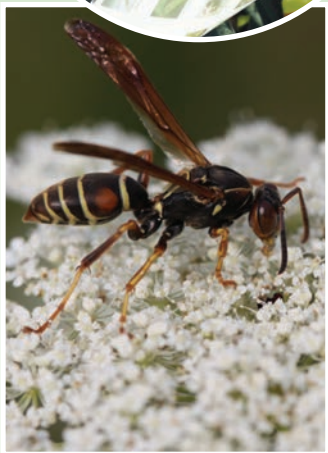
## Grades 1-2

### Beautiful Butterflies

Go on a hike, collect and observe butterflies at different stages of their life cycle. *ILS: 12A*

### Habitat is a Home

Explore small and large habitats through a scavenger hunt in the prairie. *ILS: 12B*



## Monarchs on the Move!

*2nd grade and up*

Learn about this unique phenomenon and help us catch monarch butterflies to tag. *ILS: 13A*

Only Available in September!



## Grades 3-4

### Eat or Be Eaten

Uncover how energy flows as students get tangled in the food web. *ILS: 12B*

### Insect Adaptations

Hike around Peck Farm Park to discover unique characteristics and adaptations of a variety of insects. *ILS: 12B*

## Grades 5- Middle School

### Prairie Biodiversity

Students use sampling, observation, and data collection techniques to gather information about plants. By graphing, analyzing, and comparing data, students will determine species richness and biodiversity of different areas of Peck Farm. *ILS: 12B*

### Water Quality

Examine local macroinvertebrates and uncover the water quality of different bodies of water. *ILS: 12E, 13B*

# Programs in Schools

Can't come to Peck Farm Park? Let us bring a little nature to you. Invite a naturalist from the Geneva Park District to visit your classroom for a fun-filled, hands-on lesson.

## Preschool - Kindergarten

### Animal Tales

This hands-on program provides students with the opportunity to observe, touch and learn about a variety of animals. *ILS: 12A*

### Plants Grow

Hear a story about a tricky rabbit and a lazy bear while discovering plant parts and what plants need in order to grow. *ILS: 12A*

## Grades 1-2

### Frogs and Toads, oh My!

Students will discover the characteristics of amphibians through a variety of activities. *ILS: 12A*

### Cycles of Life

Discover some of the cycles that happen to the plants and animals that live right in our backyards! *ILS: 12A, 12B*

## Grades 3-4

### Animal Tracking

Students learn about animal adaptations and life styles based on their tracks. *ILS: 12B*

### Reptiles and Amphibians

Do you know the difference between a reptile and an amphibian? Explore the unique characteristics that set them apart from other vertebrates. *ILS: 12A, 12B*

## Grades 5-6

### Parts of Pollination

Students will dissect a flower to discover the importance of flowers and pollination. *ILS: 12A*

### Who's in the Food Chain?

Discuss the unique calls and adaptations of Illinois owls. Students will dissect owl pellets to understand the owls' place in the food chain. *ILS: 12B*